

A Program of **NJBIZ**

Leaders in Law



Major Sponsor



Supporting Sponsors



Venue Sponsor





Congratulations

TO PRINCIPAL

Deirdre Wheatley-Liss

FOR HER OUTSTANDING WORK
IN WEALTH PRESERVATION!

PORZIO
Bromberg & Newman

NEW JERSEY | NEW YORK | MASSACHUSETTS | DELAWARE | PENNSYLVANIA | PUERTO RICO

WWW.PBNLAW.COM

Table of Contents

Welcome Letter4
 Meet the Judges.....4

Agnes Antonian 5
 Patricia Barbarito..... 5
 Diane Bettino 6
 Isabelle Bibet-Kalinyak 6
 Cynthia Borrelli..... 8
 Frank T. Cannone, Esq..... 8
 Domenick Carmagnola..... 8
 Jeffrey Chiesa 8
 Irene Chiu..... 10
 John Fanburg..... 10
 James P. Flynn..... 10
 Karl Fowlkes 10
 Andrew Fraser..... 11
 Ann Gavzy..... 11
 Angelo J. Genova, Esq.....12
 Casey Gocel12
 Stephen Herbes.....12
 Sanjay Ibrahim.....12
 Everett M. Johnson.....13
 Vanessa Kelly13
 Jeremy Kleiman..... 14
 Lori Landew 14
 Lisa Lombardo 14
 Joseph Lubertazzi 14
 Joseph Lucosky15

Marie Mathews15
 Steven G. Mlenak.....16
 Laurie Newmark16
 Steven Nudelman.....16
 Kevin O’Connor16
 Elliot Ostrove 17
 Sherilyn Pastor 17
 Melissa Peña19
 Loren Pierce19
 Linda Pissott Reig21
 Arthur “Scott” Porter21
 Ruth A. Rauls.....22
 Natalie Richer.....22
 Beth Rose.....23
 Kenneth Rosen, Esq.....23
 Renee Rubino.....24
 Lee Samuelson24
 John M. Scagnelli25
 Michael Shadiack.....25
 Rachel Stark26
 Anthony Sylvester26
 Deborah Tyler.....26
 Deirdre Wheatley-Liss.....26
 Linda Wong27
 Yannick Wood.....27

NJBIZ

Mailing Address

220 Davidson Ave., Suite 302,
 Somerset, NJ 08873

www.njbiz.com • (732) 246-7677

PUBLISHER

Ken Kiczales

GENERAL MANAGER

AnnMarie Karczmit

ADVERTISING

SENIOR ACCOUNT EXECUTIVES

Penelope Spencer

Kirsten Rasky

Ilene Roman

EDITORIAL

EVENT SUPPLEMENT EDITOR

Karren L. Johnson

WEB EDITOR/
 SOCIAL MEDIA COORDINATOR

Jessica Perry

PRODUCTION

SPECIAL PROJECTS DESIGNER

Anna Otto

Published by Bridgetower Media



CONGRATULATIONS

ISABELLE BIBET-KALINYAK
and **JOHN D. FANBURG**
for receiving the



2022

NJBIZ LEADERS IN LAW AWARD

EXPERTISE. INNOVATION. LEADERSHIP.

BRACH | EICHLER^{LLC}

Roseland, NJ | New York, NY | West Palm Beach, FL | www.bracheichler.com | 973.228.5700



Welcome Letter



Welcome to the second annual NJBIZ Leaders in Law awards publication!

Last year, in response to feedback from you, our passionate readers, users and guests, we enhanced our long-time General Counsel of the Year awards to bring you the inaugural Leaders in Law recognition program celebrat-

ing New Jersey's top legal professionals serving in a wide variety of capacities and going above and beyond to contribute to their company's success while doing so with flexibility and grace under pressure.

As the New Jersey business community continues to emerge and bounce back from the impacts of the COVID-19 health crisis, companies are relying on the expertise of legal professionals more than ever to help ensure business continuity and employee health and safety.

Deciding which Leaders in Law should be honored was not an easy job. The outstanding honorees were selected from a highly qualified

field of candidates. An independent judging panel, not affiliated with NJBIZ, selected this year's honorees.

Representing a diverse range of companies and organizations, many of our honorees have played a major role in growing their companies or building their legal departments from the ground up. Some serve in private boutique practices while others work at large corporations.

Most importantly, however, these legal experts show the benefits of being involved in the community. Many have played important roles in their local bar associations, contributed to panels and publications, volunteered to mentor new lawyers, increase diversity in the workforce, and lead pro bono initiatives.

NJBIZ, along with our sponsors, is extremely proud to recognize the hard work, innovation and vision of the Garden State's most successful Leaders in Law. Keep turning the pages to learn more about their accomplishments, their favorite business advice and what inspires them.

Karren L. Johnson
Event Supplement Editor

Meet the Judges



Gary Botwinick
Co-Managing Partner
Einhorn, Barbarito, Frost &
Botwinick, PC



Danielle M. DeFilippis
Member, Co-Chair of the Intellectual
Property Law Practice Group
Norris McLaughlin P.A.



Robert M. DiPisa
Member
Cole Schotz P.C.



Sandra C. Fava, Esq.
Partner – Family Law
Fox Rothschild LLP



Galit Kierkut
Shareholder
Greenberg Traurig, LLP



Sandra L. Lascari, Esq.
Principal/Owner
Law Offices of Sandra L. Lascari, LLC



Diana C. Manning
Firm Managing Principal
Bressler Amery & Ross, P.C.



Michael C. Zogby
Partner
Faegre Drinker Biddle & Reath LLP



Agnes Antonian

Chair, Environmental Law Group
Connell Foley LLP
Roseland, Essex County

What is your greatest contribution to the success of your company/clients? Having once been on the client side, I have a unique understanding of the environmental landscape. This bird's-eye view allows me to be more creative in my legal approach, thinking outside of the box to produce real results for my clients.

Who has been your most influential role model? Larry Liebs, my first boss out of college. He was simultaneously brilliant and scary, and he expected hard work and excellent work product every single time. He was also my biggest supporter and an incredible teacher. He believed in me and made me believe in myself. Always pushing me to excel, Larry encouraged me to get my law degree (and he made sure the company paid for it). Larry passed away recently, and while I miss him tremendously, knowing that he was proud of what I have accomplished has meant the world to me.

What types of charities, community involvement or pro bono work do you take part in? Giving back to the community is very important to me. I serve on the board of Wynona's House Child Advocacy Center, a nonprofit dedicated to helping abused and neglected children. Over the years, I have provided pro bono services on matters involving domestic abuse. I also was selected to serve as a New Jersey State Bar Association Ethics Committee member for four years. Previously, as a member of the firm's hiring committee and co-chair of its Women's Initiative, I dedicated a great deal of time to helping create an environment that fosters and supports the personal/professional development of the firm's women.

Patricia Barbarito

Co-Managing Partner;
Chair, Board of Directors
Einhorn, Barbarito, Frost & Botwinick, PC
Denville, Morris County



What is your greatest contribution to the success of your company/clients? Cultivating the reality of Einhorn Barbarito has been my vision for the past 42 years, and I have remained committed to ensuring that our legacy has the strongest foundation. I joined Einhorn Barbarito while still in law school and continue to believe this firm is a great environment for new attorneys to hone their craft. My objective is to provide compassionate client service, zealous advocacy, supportive mentorship and an unwavering commitment to respect and integrity, despite market downturns, industry challenges or a global pandemic.

How has your role as a "Leader in Law" evolved over the years? I have learned that mentorship is a two-way street. I offer my strength, compassion and conviction earned through experience and, in turn, receive the trust, innovative perspective and enthusiasm from the mentee. If I can harness and direct that raw energy, I can help shape the next generation of lawyers and bring change to the legal industry and the world.

What would most people be surprised to learn about you? I host a podcast called "Heartbreak and Hope with Pat Barbarito" where we talk about everything related to building up or breaking down relationships with confidence, clarity and compassion. The show features a variety of experts and includes insights from my own complex life journey. It requires a lot of vulnerability on my part, and I've had to examine aspects of my life in new and different ways to be able to guide conversations.

Connell Foley LLP congratulates our partners Agnes Antonian & Michael Shadiack



NJBIZ

"Leaders in Law"



Chair, Environmental Law Group

Chair, Labor & Employment Group





Diane Bettino

Managing Partner, Princeton Office;
Co-Leader, Financial Services Litigation Team
Reed Smith LLP
Princeton, Mercer County

What is your greatest contribution to the success of your company/clients? I have the ability to efficiently handle a large volume of cases ranging from small to large, complex matters and get great results—

either an outright win or a successful resolution for the client. Among my greatest contributions to the firm is my record of constantly and consistently bringing in new business and retaining my existing relationships. My clients return again and again for advice and counsel on critical matters because they know and trust my capabilities in helping them obtain a favorable resolution.

What do you enjoy most about your career? I love financial services litigation because it is always changing and challenging. It is multi-faceted and never stagnant. I love all aspects of being a litigator, including developing strategy, researching, writing briefs, and also presenting our arguments in the courtroom. Another aspect of my job that is extremely rewarding is developing talent and guiding our next generation of attorneys. It is gratifying to work with paralegals and junior attorneys, and to watch them develop and grow.

Who has been your most influential role model? My mother was a very large influence. She went into the workforce so she could put us into a very good private school. She went to work for our local tax collector and when he retired, she ran for his office and won. She was the first woman elected to a public position in our town. I was so proud of her. Her hard work for us and her public role at a time when women were barely in the workforce inspires me to this day.

Isabelle Bibet-Kalinyak

Counsellor at Law and Member
Brach Eichler LLC
Roseland, Essex County



What is your greatest contribution to the success of your company/clients? During my short tenure at

Brach Eichler, my favorite/greatest contribution is in the “human department.” On March 8, 2022, the Women of Brach Eichler celebrated International Women’s Day firmwide for the first time—lawyers, non-lawyers, third-party vendors all united, to celebrate and amplify women’s achievements and raise awareness about women’s equality. We embraced this year’s global theme #BreaktheBias. I am proud of having been the spark that initiated this.

What types of charities, community involvement or pro bono work are you involved in? I currently serve on two boards, Walsh University and the French-American Chamber of Commerce of Ohio, a reflection of my passion for education and international relations as levers for equity. I focus my pro bono work on immigration where my experience as a first-generation immigrant helps children and adults from diverse backgrounds achieve the American Dream.

What do you enjoy most about your career? I love to attend professional association conferences and meet health care providers, thought leaders and vendors in their environment. I present on health care legal/business topics and enjoy sharing how to navigate the myriads of health care laws and regulations while staying focused on patients and running a business. I get to hear the latest across a broad spectrum of fields. I recently presented at the American Academy of Ophthalmology in New Orleans at the end of 2021 and the thrill was back following several years of hiatus due to COVID-19.

STARK & STARK

ATTORNEYS AT LAW

Congratulations to

Rachel L. Stark, Esq.

and all of the Honorees of the
2022 NJBIZ Leaders in Law Award

Rachel Lilienthal Stark is a Shareholder and Chair of the Business & Corporate Group, as well as a member of the Banking & Financial Services, Business & Corporate, Intellectual Property, and Non-Profit Organization Groups.



993 Lenox Drive, Lawrenceville, NJ 08648 • www.Stark-Stark.com • 1-800-53-LEGAL
Rachel L. Stark, Esq. • rstark@stark-stark.com

No aspect of this advertisement has been approved by the Supreme Court of New Jersey.



Relationship Focused. Results Driven.

Lucosky Brookman is a corporate law firm with offices in New York, New Jersey, and Pennsylvania representing both domestic and international clients in sophisticated corporate and securities transactions, mergers and acquisitions, uplisting transactions, SPAC transactions, secured and unsecured lending transactions, PIPEs, commercial and securities litigation, intellectual property, insurance coverage and defense, real estate and general corporate matters.

The Firm was established out of a desire to dedicate more time and effort to directly serve our clients in the small and middle markets. At Lucosky Brookman, we see the world through our clients' eyes. It is our mission to provide clients with exceptional legal representation and hands-on attention. We are able to do this by listening to our clients and anticipating their needs.

101 Wood Avenue South, 5th Floor | Woodbridge, NJ 08830
(732) 395-4400

111 Broadway, Suite 807 | New York, NY 10006
(212) 417-8160



www.lucbro.com



Cynthia Borrelli

Principal
Bressler, Amery & Ross, P.C.
Florham Park, Morris County

What is your greatest contribution to the success of your company/clients? Over the last 38 years, I have learned all aspects of the insurance and health care industry and represent a broad sector of clients. I

have developed strong relationships with regulators nationally, enabling me to advocate on behalf of my clients and thus ensure value-based, cost-effective and quality care for consumers. I have helped to transform my clients into partners with regulators as opposed to adversaries.

What do you enjoy most about your career? I love to solve problems. My practice has presented me with many complicated and novel issues and has allowed me to be on the cutting edge of a growing and evolving health care industry. It has provided the intellectual challenges I had anticipated, but has also allowed me to mentor, teach and assist the underserved, all of which I have come to realize I value at least as much as the intellectual challenge.

What types of charities, community involvement or pro bono work are you involved in? I am a former mentor, and remain committed to NJ Leep, a college access and success program serving students and families in the greater Newark area. I am also a supporter of the Newark Boys Choir School, which provides an education in music, as well as the traditional high school curriculum for underprivileged boys. Finally, in 2021, I was appointed to the Board of Ambassadors of the National Health Law Program founded to protect and advance the health rights of low-income individuals and underserved individuals and families.

Frank T. Cannone, Esq.

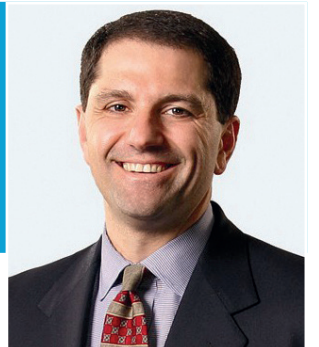
Chair, Corporate Group;
Member, Executive Committee
Gibbons P.C.
Newark, Essex County

What is your greatest contribution to the success of your company/clients? Under my direction, the

Corporate Group has become known for its complex transactions and strong, capital markets-based approach to corporate practice, making us unique among New Jersey-headquartered firms and a “go-to” firm for these sophisticated deals. I’ve personally overseen the establishment of the group’s Governmental Transactions, Early-Stage Business, Renewable Energy Finance, and Private Equity practices, and expansion of the Cross-Border Transactions and Corporate Healthcare practices, among others.

How has your role as a “Leader in Law” evolved over the years? Because of COVID-19, I had to ensure that my team and I became highly efficient at functioning on a remote basis, which we achieved almost seamlessly. As our offices reopened, my group easily adapted to hybrid in-office and remote work, and I adapted my leadership to address this new reality. I also took on greater responsibilities when I was named a member of the firm’s Executive Committee.

What was a career challenge you overcame? When Gibbons contacted me with an offer to join and lead its Corporate Group, I was already a Partner with a management role at a global corporate firm in New York. But the opportunity to lead a middle market legal practice for sophisticated transactions was difficult to refuse. Ultimately, moving from a global firm afforded me the space, resources and hands-on institutional support to launch and build an innovative, successful middle-market practice in New Jersey.



Domenick Carmagnola

Founder and Member
Carmagnola & Ritardi, LLC
Morristown, Morris County

What is your greatest contribution to the success of your company/clients? Leadership and mentoring. Leading by example including working hard, being committed to excellence, and focusing on doing what is

best for our clients. I make a concerted effort to mentor all our attorneys and paralegals and motivate them to improve their skills, generate excellent work product, and do their best to obtain an excellent result.

What do you enjoy most about your career? I love what I do, the area of law I practice in and the people that I practice with. The issues I get to deal with are incredibly interesting. Employment law is constantly changing and challenging, which keeps things new and exciting. Every day and every case present unique issues. I also enjoy putting together seminars and speaking at them. The labor and employment bar in New Jersey is full of truly dedicated professionals who are among the best and brightest attorneys in the state and the opportunity to give back to others in our profession is especially gratifying.

What is something about yourself that would surprise others? I am a former pizzaman and I was incredibly shy. I started working in a pizzeria when I was 12 years old, and I was actually still working at my family’s pizza place and restaurant after I became an attorney and started practicing law. I believe working in that family business and dealing with customers helped me overcome my shyness and also helped me develop certain skills that I have utilized effectively in my business, practice and trial work.

Jeffrey Chiesa

Member of the Firm
Chiesa, Shahinian & Giantomasi
West Orange, Essex County

What is your greatest contribution to the success of your company/clients? I believe my

greatest contribution to the firm is to ensure that our culture of kindness and empathy is maintained, especially through periods of change and growth. CSG Law has grown exponentially, and today boasts more than 175 lawyers and 300 employees. We have focused on recruiting professionals who engender the qualities we value along with a high level of professionalism and commitment to excellence.

How has your role as a “Leader in Law” evolved over the years? It’s hard to believe that the law school student who parked cars for staff members at the United States Senate would one day become a U.S. Senator. I’ve never forgotten my roots or what it was like coming up from the ranks, so I’ve taken those lessons, refined them and incorporated them into my own mentoring and recruiting. Accordingly, not only have I had the ability to work with some of the best attorneys in the state, but I’ve been lucky enough to bring many of them into CSG Law.

What do you enjoy most about your career? What I enjoy most about my career is recruiting and mentoring talented lawyers and colleagues within the firm and continuing to advance their professional aspirations. CSG Law is a special place, with a culture that embraces our people and inspires them to provide the best service to clients. I am so proud to say that I am a member of this firm, but even more proud to serve alongside the talented team of lawyers and professionals we have assembled.





The Power of Collaboration.

SAUL EWING
ARNSTEIN
& LEHR ^{LLP}

saul.com

We proudly support **NJBIZ** and congratulate all the honorees, especially our partners **Ruth Rauls** (Princeton) and **Anna Maria Tejada** (Newark) on being honored as **NJBIZ's 2022 NJBIZ Leaders in Law!**



Ruth A. Rauls
Partner
609-452-5049



Anna Maria Tejada
Partner
973-286-6727



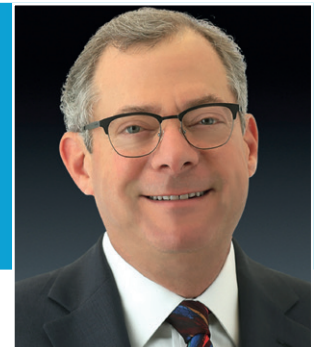
Irene Chiu

Senior Vice President, General Counsel
MicroPort Orthopedics Inc.
Princeton, Mercer County

What is your greatest contribution to the success of your company/clients? In addition to leading my company's global legal, compliance and IP strategy, my greatest contribution is acting as its first go-to strategic advisor and liaison with its parent company (a diversified global company listed in the HKSE). With an exceptional track record in the legal field spanning over 20 years in both private and in-house practices, I am the company's first GC with over 100 countries experience, thus able to identify issues and provide global strategies efficiently. As the youngest member of the executive team and the company's first female GC, I have introduced new ideas and emphasized diversity and inclusion.

How has your role as a "Leader in Law" evolved over the years? At the U.S. attorney's office, I was the only law intern qualified for the Economic Crimes Division. In 2001, as a second-year associate, I was invited to the Global Summit of Women as the U.S. legal representative. At Morgan Lewis, I was the only non-partner committee member to help build up its China practice. While making partner, I was invited by OEP (JPMorgan) to build up the legal/compliance department for the J&J divestiture.

What is something about yourself that would surprise others? I have three pet turtles and one is 14 years old! I love traveling and have visited more than 30 countries and speak four languages (though speaking turtle is not one of them). I am a foodie and cook better than many chefs. I do competitive swimming and tennis. I have been playing piano (and composing) since I was 5 years old.



John Fanburg

Managing Member and
Healthcare Law Chair
Brach Eichler
Roseland, Essex County

What is your greatest contribution to the success of your company/clients? In a sector that continues to see consolidation among industry participants, my key role is in facilitating and structuring mergers, acquisitions, purchases and sales of medical groups large and small.

How has your role as a "Leader in Law" evolved over the years? As a "leader in law," the role has evolved from someone who handles client work to a profession that encompasses being a motivator and coach to attorneys in the firm. As any managing partner will tell you, our greatest assets are the attorneys and staff at the firm. They are all people with families, responsibilities, joy and at times anguish. Those strong relationships internally are mirrored in our client interactions as they look to us to help them with their problems and business needs. When the clients see how we show up for them, it creates strong relationships for life.

What is a career challenge you overcame? Our firm merged with a Philadelphia-based regional firm and in 2009 it went out of business, which required the Brach Eichler partners to immediately reform a new firm with the staff in our Roseland office. Each employee, at every level, worked to build a viable law firm to not only continue to support ourselves but most importantly, to provide ongoing legal services to our clients. It was a challenging time for all of us and the most challenging time in my career, however it was also my proudest because of the collegiality and collaboration that emerged from this hurdle.



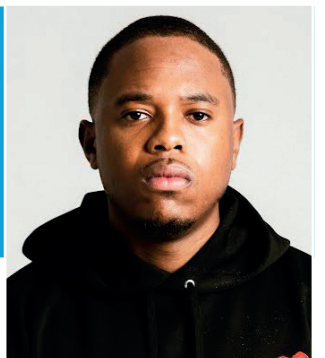
James P. Flynn

Managing Director/Member of the Firm
Epstein Becker Green
Newark, Essex County

What is your greatest contribution to the success of your company/clients? My clients know I'll fight for them all the way, anytime and every time. But they know they will always get an honest, clear-eyed appraisal of the law, the facts and their prospects. On the firm side, my colleagues get the same things, plus the shared vision and language of values we have created over the last several years.

What do you know now that you wish you'd known earlier in your career? That "soft skills" is a misnomer. Early on, you think that success as a lawyer is about courtroom technique, fact retention, writing ability and getting the right words out. Those things help, of course, but real success and satisfaction come from being able to sense the atmosphere in the courtroom, comprehend what people are feeling, have the ability to empathize and listen in the best way possible. Those aren't soft skills—those are the things that need to be hardwired into everything you do.

What inspires you to continue in your current profession? The chance to learn something new. I love learning new things, and that happens every day as a lawyer. Maybe it is a new law or fresh legal concept. But more often, it is how an unfamiliar business runs or a new (at least to me) machine or invention works. If I weren't doing that as a lawyer, I'd be reading books about things I didn't know or going to places to see things I hadn't seen before. Being a lawyer lets me do that and get paid for it.



Karl Fowlkes

Managing Partner
The Fowlkes Firm
Newark, Essex County

What is a career challenge you overcame? Opening a solo practice can be difficult especially when you are fairly young. There is a combination of inexperience and anxiousness that you must overcome. Additionally, you have to strike the appropriate balance between attorney work, marketing your firm and managing employees. In three short years at The Fowlkes Firm, I've been able to successfully navigate the tricky and unsure waters of opening a practice. The Fowlkes Firm is now one of the few established entertainment law firms in the state.

What mistake have you made that you learned the most from? Taking opportunities for money. Early in your career, financial incentives might be driving your decisions but in reality, you have to assess whether your next move gets you closer to where you ultimately want to be.

What do you enjoy most about your career? I really enjoy helping creatives protect their work. Historically, underrepresented creatives were subject to marginalized deals that resulted in a lack of intellectual property ownership. At The Fowlkes Firm I get to help my clients structure their business in a way that their legacies will live on forever.

What inspires you to continue in your current profession? New Jersey is a hub for entertainment and creative industries yet it hasn't gotten the same respect mainly because important players from the industry who happen to be from New Jersey often leave. It's important for me to build my law practice from New Jersey to continue to enhance the prospects of the New Jersey entertainment industry going forward.



Andrew Fraser

Partner
Laddey Clark & Ryan LLP
Sparta, Sussex County

What is your greatest contribution to the success of your company/clients?

When I was a new partner at the firm, 30 years ago, I proposed to my senior colleagues that we create a personal injury

practice. They were initially hesitant, fearful of tarnishing the firm's image among its corporate and municipal clientele. They were not wholly convinced until I brought in our first seven-figure verdict—the largest such verdict until that time in Sussex County—followed three months later by a second and larger multi-million-dollar verdict. Since then, we have continued to grow our personal injury practice and have achieved a long line of such verdicts.

How has your role as a “Leader in Law” evolved over the years? I am a big believer in the adage, “A rising tide lifts all boats.” When our firm started achieving unprecedented verdicts in disc herniation cases, I decided to share our “secret sauce” by speaking at seminars. Rather than seeing this as giving away our secrets to the competition, I view it as a way of helping our profession achieve better verdicts for deserving clients.

What inspires you to continue in your current profession? What inspires me to represent seriously injured people is my empathy for their plight. I remember receiving the call from the police when two members of my family were killed in a car crash. I also recall how the insurance companies tried to take advantage of us during a very difficult time. At that time, I was a brand-new lawyer, representing big insurance companies. I changed my focus to help families as they went through their own tragedies. I am pleased to have spent decades pursuing justice on behalf of families who deserve nothing less.

Ann Gavzy

Executive Vice President,
Co-Chief Legal Officer
Hackensack Meridian Health
Edison, Middlesex County

What is your greatest contribution to the success of your company/clients?

To realize Hackensack Meridian Health's vision, we are building programs and providing services that meet the needs of our community. In my world, this is accomplished through developing new structures of mergers and acquisitions, partnerships and alliances, and other collaborative arrangements. These negotiations must be creative and flexible to benefit our ultimate stakeholders—our patients and communities.

What is a career challenge you overcame? Work-life balance of women attorneys is often talked about because I believe it is universally challenging. In my view, there is no magic solution. It's about daily attention to detail, managing the professional and personal parts of life that are important, and being fully present. In my career and family life, I am always mindful that this challenge exists and must be actively managed. That level of awareness serves me well. I am grateful for the support I receive from my family and friends and in the workplace.

What do you enjoy most about your career? From a legal point of view, I never have the same day twice. I am always challenged to be both a lawyer for the organization, as well as a business partner. I enjoy working within the health network to help formulate strategies, identify benefits and obstacles, and then drive the execution as a means of ultimately caring for the communities we serve. It's about supporting the Hackensack Meridian Health mission to transform health care and serve as a leader of positive change—and it's the team members at the network who inspire me in the work I do every day.



McCarter & English

We congratulate the
2022 NJBIZ Leaders in Law
and applaud our exemplary leaders



Joseph Lubertazzi, Jr.
Chairman



Sherilyn Pastor
Chair, Insurance Recovery,
Litigation & Counseling Group

Four Gateway Center, 100 Mulberry Street, Newark, NJ 07102
973.622.4444 www.mccarter.com



Angelo J. Genova, Esq.

Chairman & Co-Founding Partner
Genova Burns LLC
Newark, Essex County

What is your greatest contribution to the success of your company/clients? I work very hard to understand each client's objectives and business, I passionately seek out favorable solutions and I advocate

with tenacity, with integrity, with ethics and with good judgment. I believe lawyers must know their case inside and out. In my mind, there is no substitute for preparation, attention to detail, and an uncompromising commitment to advancing the client's interests. I see my role as a "counselor" and problem solver, embracing my responsibility to educate clients about their legal rights, responsibilities and vulnerabilities, while assisting them in developing a clear path towards defined legal outcomes.

What types of charities, community involvement or pro bono work are you involved in? I serve on the board of Big Brothers/Big Sisters of Greater Newark and the New Jersey Hall of Fame. I have undertaken pro bono representation amicus in a case challenging New Jersey's school funding formula as it relates to the underfunding of school construction. I serve as a Trustee of Rome's John Cabot University, Trustee of the Montclair State University Foundation, and on the board of the Italian American Democratic Leadership Council. I am a former Chairman of the Greater Newark Holiday Fund and former Chairman of the Legal Services Foundation of Essex County.

What inspires you to continue in your current profession? Every day is a new dawn of problem solving, issue identification and legal advocacy, all for the purpose of making a difference in the lives of others. Only thing that might be better is being the front man for the Rolling Stones, and that job is taken.

Casey Gocel

Attorney
Mandelbaum Barrett PC
Roseland, Essex County



What is your greatest contribution to the success of your company/clients? As the youngest, and only female member, of the firm's executive committee, I bring a new perspective to an

organization that has historically been governed by older men. Since becoming a shareholder of the firm, I've played an integral role in modernizing the culture of our firm and our policies, including, but not limited to, adding a lactation room, writing a maternity leave policy, creating a mentoring program, and assisting in the rebranding of the firm.

What was a career challenge you overcame? Returning to my full-time legal career following the birth of my first child was incredibly challenging. As a partner in the firm and member of the executive committee, my workday doesn't end at 5 p.m. Juggling the demands of motherhood with a husband who travels for work was incredibly hard. I had to learn to manage my time very effectively and say no to things that didn't support my productivity. I learned to laser focus on the things that matter most and I was not only able to maintain my full legal practice, but I increased productivity by 40 percent.

What do you enjoy most about your career? I love many things about my career, but the most satisfying part of my job is co-chairing our dental practice group. I love getting on our weekly calls and hearing about the big wins that our team has accomplished. This position has also given me the freedom to co-author two books and travel the country speaking as an expert in the area of dental law. It is very fulfilling.



Stephen Herbes

SVP & General Counsel
Konica Minolta Business Solutions U.S.A., Inc.
Ramsey, Bergen County

What is your greatest contribution to the success of your company/clients? I have built a diverse legal department (66 percent people of color; 66 percent female) that leverages institutional knowledge and legal

solutions to significantly reduce external legal spend and deliver sophisticated, timely advice in acquisitions, contract negotiations, litigation and HR consulting. My greatest contribution has been to institutionalize a diverse workforce and demonstrate the positive ROI from that commitment.

How has your role as a "Leader in Law" evolved over the years? Earlier in my career, my conception of leadership was someone who provides legal advice to others. Someone who tells others what they should and should not do. As my career progressed, I realized the role of a leader is less about telling other people what they should or shouldn't do, and more about helping them arrive at a fair and reasonable solution on their own. In doing so, I've seen my sphere of influence expand outside of pure "legal" issues to broader business concerns.

What do you enjoy most about your career? After 20 years, I still enjoy the opportunity to help others. When I entered law school, I did it with the hope that I would be able to change the world in some small way. I wanted to help other people. After all these years, that's still what keeps me in this profession.

What is something about yourself that would surprise others? In addition to my legal career, I am an accomplished violinist, and I played in various symphonies when I was younger.

Sanjay Ibrahim

Managing Partner
Parker Ibrahim & Berg LLP
Somerset, Somerset County



What is your greatest contribution to the success of your company/clients? Creating a highly trusted firm and with a unique and fantastic culture. Eleven years ago, I stepped away from a

senior in-house counsel role with a leading, global financial company to start this law firm with two trusted friends. As managing director and CEO, I set out to create and maintain a new and vibrant firm culture while creating deep partnerships with clients and the community. Our firm is unimposing, family first, a place where diversity is genuinely valued and promoted, and everyone is on a first-name basis.

What was the best business advice you ever received? The best business advice I have ever received was to leave something better than how you found it. This is a message and reminder that you have the power to be a steward and not just a participant in life. Stewardship requires a sense of special care. This is a call to actively participate in community and to treat people well.

What inspires you to continue in your current profession? When we created PIB 11 years ago, the goal was to combine hard work, high-quality representation—along with some start-up jitters—with having fun and enjoying life. What has inspired me mostly is having the opportunity to give back to the community in an impactful way. Especially during the difficult times, it is important to pay it forward through service and contribution to the community, charities, and social causes. In fostering a firm-family, you get to be inspired by that force-multiplier effect, the strength of many actively participating in the service of others.



Everett M. Johnson

Shareholder
Wilentz, Goldman & Spitzer, P.A.
Woodbridge, Middlesex County

What is your greatest contribution to the success of your company/clients?

I believe delivering advice as counsel to help my clients achieve their goals is my most significant contribution to their success. Last year, I served as counsel to the Newark Board of Education

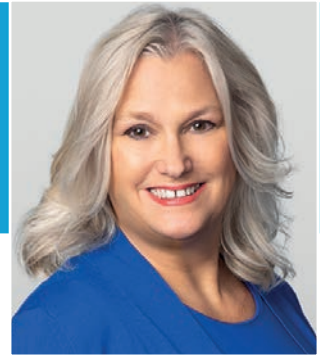
on its \$93.9 million energy-saving improvement bond financing, which will fund 60 energy-efficient school buildings, saving the district \$120 million over 20 years, with no new taxes levied on the residents. As a result, the financing was named national Green “Deal of the Year” by The Bond Buyer.

What was a career challenge you overcame? When I began my career, I did not have a built-in network of people to tap for business; my challenge was learning how to develop a book of business. But, having recognized that a book of business was essential to becoming a shareholder at my firm, I followed the advice of one of my mentors to join community and political groups that aligned with my interests. Through those efforts, I have built a significant client base, which led to being named a shareholder at Wilentz in 2011 and co-leader of the Public Finance Team in 2022.

How has your role as a “Leader in Law” evolved over the years? I once thought that a “leader in law” meant being in the leadership of bar associations and other legal interest groups. I now view leadership as providing young attorneys with opportunities for employment and mentorship. Last summer, I spearheaded the firm’s 1L Diversity Internship Program to give diverse students the opportunity to gain experience at a big firm.

Vanessa Kelly

Member
Clark Hill PLC
Princeton, Mercer County



What is your greatest contribution to the success of your company/clients?

My empathy and passion for collaboration is one of my most valuable contributions. I have a positive, can-do, attitude that transcends everything I do, from working with clients,

our operation teams, mentoring associates, and interacting with colleagues. I excel at thinking outside the box and looking for holistic solutions that provide a “win” for all involved, whenever possible. I am a team player and believe that when we work together anything is possible. I am also devoted to advancing diversity within the legal professional and actively seek to sponsor and mentor attorneys from underrepresented communities.

What was the best business advice you ever received? Bob Mazey, dear friend, client and president of the New Jersey Agents Alliance gave me the best business and life advice: “Be positive and believe.” Changing my attitude to one of positivity and belief in the possible has not only made me more successful, but happier. Setting goals, being aware of opportunities, and taking action, fully believing in the certainty of the goal, has been a game changer for me.

What do you enjoy most about your career? I become part of a core team and enjoy serving as a respected confidante to help achieve client goals. My work brings intellectual challenges. Responding to client needs during the pandemic created new growth opportunities for me. Almost daily, I interpret complex legislation, keep abreast of ever-evolving guidance, and furnish clients with the best possible tools to meet this emergency. While exhausting, I am grateful to be able to help my clients during these trying times.

Congratulations,
Irene Chiu, SVP
General Counsel,
NJBIZ 2022
Leaders in Law
Honoree





Jeremy Kleiman

Member; Chair, Gaming Law Practice
Saiber LLC
Florham Park, Morris County

What is your greatest contribution to the success of your company/clients?

I've always believed that my clients' success is my success. I take great pride in my work as an attorney, and when I see the results of my

efforts benefit my clients' business goals, it validates my role as an integral member of their core team. I believe that my greatest contribution is providing business-minded, pragmatic legal advice that takes into consideration the global picture of my clients' business. The companies I work for do not operate in a vacuum, and neither do I. Understanding the industry and my clients' goals is paramount to my/our success.

What do you enjoy most about your career? Being a problem solver is one of the primary reasons I decided to become an attorney. I've always enjoyed looking at a complex legal issue, gathering all the facts and evidence, and then developing an innovative and creative solution. What makes this process even more fulfilling is that I get to solve problems for my clients daily. Lawyers need to be intellectually curious by nature, which is something that I've always been proud of being.

What types of charities, community involvement or pro bono work are you involved in? For over 20 years, I have volunteered with the Emergency Services team of Ridgewood, New Jersey, formerly serving as a Lieutenant. Ridgewood Emergency Services is the primary provider of Emergency Medical Services for the Village of Ridgewood. The team is staffed entirely by volunteers of the surrounding community and consists of EMS, Special Operations, and Teens in Emergency Services divisions.

Lori Landew

General Counsel
Audible
Newark, Essex County

What inspires you to continue in your current profession?

Knowing that my work and my experience can help others, never gets old. Whether it's offering legal advice or mentoring younger lawyers and other professionals, I am grateful that I have something that I can contribute to those who look to me for guidance. Additionally, I remain driven by an awareness that there is always more to learn and that remaining curious will continue to lead me to exciting new experiences.

What do you know now that you wish you'd known earlier in your career?

When I embarked on my career, I expected to continue along a linear path towards some pre-defined construct of success. I did not appreciate that life takes us in many directions and that we will change and grow with each new experience. I now know that there is no "one-size-fits-all" approach to a meaningful career or life and that my best decisions were those that made sense to me, even if they did not always make sense to others.

What would most people be surprised to learn about you? People are always surprised when I tell them that I sang in the choruses of the Metropolitan Opera and the New York City Opera as a young person and that I love being on stage. In my professional capacity, I avoid the spotlight. I support others in pursuit of their creative and business interests and I am very content in the background getting my job done. However, when the opportunity arises, I will gladly belt out a tune for anyone who is willing to listen.



Lisa Lombardo

Director, Commercial &
Criminal Litigation Group
Gibbons P.C.
Livingston, Essex County

What is your greatest contribution to the success of your company/clients?

I consider my strong commitment to the firm's clients to be my greatest contribution to the firm. I strive to act as a counsellor

to the firm's clients and to work towards a resolution where the client's business needs and goals are the top priority.

How has your role as a "Leader in Law" evolved over the years? In the beginning of my career my goal was to develop into a highly competent lawyer, garnering respect from my clients and more senior peers at the firm. I still strive to meet those high standards but understand that I must also serve as an example to our younger female attorneys. I feel a strong sense of duty to be a role model and a sounding board as they meet the challenges of balancing a demanding practice and personal life.

What inspires you to continue in your current profession? The continued trust my clients put in me inspires me to continue to practice law; acting as a counsellor to my clients and part of a team working towards a common goal.

Who has been your most influential role model? My sister has been a role model to me my entire life because as the older sister she paved the way for me and helped guide me in all aspects of my life. She has taught me so much, from how to drive a car to applying to college, and now as adults, how to be an independent woman in today's modern workplace.

Joseph Lubertazzi

Chairman of the Executive Committee
McCarter & English, LLP
Newark, Essex County

What is your greatest contribution to the success of your company/clients?

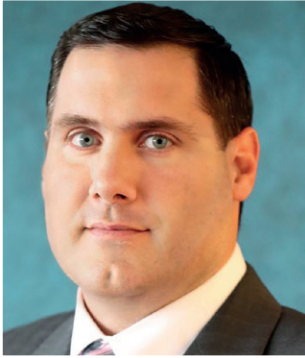
Being a long-time partner to our clients, and helping them resolve the challenges they face on a daily basis. I see my greatest contributions in listening, providing pragmatic advice and solving problems especially when there was so much uncertainty during the height of the pandemic. Showing empathy and maintaining a steady and positive outlook to help people get through some very challenging situations was key to our firm's success.

What types of charities, community involvement or pro bono work are you involved in?

As the chairman, I directed the launching of McCarter's Social Justice Project in 2020 and then installed very capable people to chair the project. The project was initiated after George Floyd was killed. We saw the need to give back to the community through our firm's pro bono and D&I resources, to focus on the underlying causes of injustice and putting an end to systemic racism.

What was the best business advice you ever received? Remember people have a boss they must report to, and they are trying to make a living. Without compromising your business objectives, make the other side—be it a client or an adversary—look good. Your client should not be surprised by anything that occurs, and your adversary should not be embarrassed in front of his or her client. Many times, that will lead to a good outcome instead of a contentious matter. You will deliver a better, more cost-effective result for your client, which will advance your client's career and endear you to your client. A win, win.





Joseph Lucosky

Managing Partner
Lucosky Brookman LLP
Woodbridge, Middlesex County

What is your greatest contribution to the success of your company/clients? Perhaps my greatest contribution to our clients is my proactive approach that is both business oriented, as well as legal. We pride

ourselves on our work product, we distinguish ourselves with our business acumen and ability to anticipate our client's needs. Of course, I share the work load and burden of successfully servicing our clients with the other members of the firm, without which our firm would not exist.

How has your role as a "Leader in Law" evolved over the years? Our firm has grown every year since its inception and the industry has evolved over the years, as well. The way I managed the firm is predicated on adapting to the times. During these past few years especially, the firm has added over 20 attorneys and support staff and was able to switch to a hybrid work-from-home model. We hired attorneys nationally for the first time and created new ways of meeting, as well as activities and events designed to make sure that the firm maintains its culture and strengthens bonds amongst its workforce.

What types of charities, community involvement or pro bono work are you involved in? I currently serve on the board of the Save a Child's Heart Foundation (SACH), a nonprofit organization dedicated to saving children and providing life-saving medical treatment. Over the past six years, our firm has worked with clients and colleagues to raise over \$775,000 on behalf of the charity. In addition, I am on the board of the Lucosky Brookman Foundation, through which our firm donates to several other causes.

Marie Mathews

Member of the Firm,
Deputy General Counsel
Chiesa, Shahinian & Giantomasi
West Orange, Essex County



What is your greatest contribution to the success of your company/clients? As a litigator, the

approach I bring to the table for clients is big picture strategy laser-focused on resolution. My aim is to get clients to where they want to be in the most direct way possible and to accomplish their goals in a cost-effective manner. This strategy doesn't necessarily involve litigation but in many cases it does.

What is a career challenge you overcame? I practiced in the Empire State for more than seven years, but, eventually, I decided I wanted to move to the Garden State, so I began the process by digging in and getting to know the New Jersey legal market. During that time, I searched for the firm that was growing and the right fit for me and found CSG Law. Years later, I'm not only a member but in a position of leadership at the top firm in New Jersey.

Who has been your most influential role model? My mother came to the U.S. from Portugal when she was 9 years old and went straight into public school without knowing any English. In her 20s, she raised three kids by herself on a shoestring budget. She taught me to be self-reliant, forthright and a hard worker.

What inspires you to continue in your current profession? I love learning, and the practice of law requires that you continue to learn and refine your skills on a daily basis. The challenge of helping clients to solve difficult problems, involving very complex and complicated issues, while learning the intricacies of their business, is inspiring.



Congratulations to our own Everett M. Johnson

and to all of the NJBIZ Leaders in Law Honorees

WILENTZ, GOLDMAN & SPITZER, P.A.

WOODBIDGE NEW YORK WILENTZ.COM
EATONTOWN PHILADELPHIA 732.636.8000
NEWARK RED BANK

WILENTZ
—ATTORNEYS AT LAW—



Steven G. Mlenak

Partner, Co-Chair, Redevelopment & Land Use Department
Greenbaum, Rowe, Smith & Davis LLP
Roseland, Essex County

What is your greatest contribution to the success of your company/clients?

I often feel my greatest strength as a lawyer comes from being raised in a family of small business owners, when I witnessed first-hand the value of each dollar a business owner spends. I understand that clients need me to make the best deals, not “over-lawyer” them. By investing myself in their objectives, I seek to earn their trust as a valued member of their team.

What was a career challenge you overcame? My career began as a community association lawyer representing common interest communities throughout New Jersey, and I still enjoy a significant practice in that specialized legal niche. I set my sights on broadening my practice scope to encompass redevelopment after being exposed to that work as an associate. Through the support of my firm, including exposure to top-notch mentoring, I was able to meet that challenge and establish myself as a well-skilled and respected redevelopment lawyer in a crowded field of first-rate competitors.

What inspires you to continue in your current profession? I love that nearly all my work is focused on building. Whether it is building infrastructure for the economy to grow, housing for people to live, industrial projects that improve the speed and efficiency with which we receive goods, or simply helping people get the zoning they need to start a small business, my work helps to build communities. Setting financial reasons aside, I cherish the opportunities I continue to have to work with truly inspiring people committed to improving our communities and our state for future generations.

Laurie Newmark

Member
Townsend Tomaio and Newmark, LLC
Whippany, Morris County



What is your greatest contribution to the success of your company/clients?

On April 1, 2009, I opened TTN with my two partners. We left a large firm so we could practice family law consistent with our core values. Namely, to provide quality representation in a respectful team atmosphere without focus on quantity or numbers. My contribution to the firm has been my leadership and steady hand. With hard work and careful planning we have grown to a highly successful 30-plus employee family law firm.

How has your role as a “Leader in Law” evolved over the years? I have been practicing law for 24 years and during that time my leadership role in the law has evolved. The type of case I handle has become more complex. I have numerous published and unpublished court decisions. I am also a mediator. Equally important, however, I serve as a mentor for the younger lawyers in my firm. I managed to excel while raising two children. Figuring out work-life balance and priorities was a challenge, and I am happy to share my experiences and provide guidance to younger lawyers.

What do you know now that you wish you’d known earlier in your career?

Flexibility and change are two main ingredients for a successful business. A thriving business must have both an original foundation but also the ability to quickly pivot and adapt to unforeseen and changing circumstances. As our business matured, we were at times resistant to change and realize now that some opportunities were potentially lost. We now embrace new situations and adapt as needed to best serve our law firm.



Steven Nudelman

Partner and Chair, Construction Contracting & Risk Management Practice Group
Greenbaum, Rowe, Smith & Davis LLP
Red Bank, Monmouth County

What is your greatest contribution to the success of your company/clients?

My greatest contribution is definitely my ability to provide specialized knowledge, usually on a specific project basis, due to my focus on construction law in the public and private sectors for over 25 years. Clients receive prompt, dedicated legal guidance, delivered in a cost-conscious manner. They understand I am not their trusted business advisor; I am their trusted construction law advisor. Clients appreciate the targeted value I add to their construction projects.

What do you know now that you wish you’d known earlier in your career?

There are ways to grow in the legal profession other than by researching, writing and advocating for clients. This includes active participation in bar associations and specialty trade groups. While many people join such organizations, few actively participate, leaving terrific opportunities for the young lawyer. The practice of law is about communication; the more chances you get to communicate, the better a lawyer you become.

How has your role as a “Leader in Law” evolved over the years? My role evolved through writing and speaking over the years. Initially, I actively sought out such opportunities, but now these opportunities frequently seek me! My exposure increased after serving as an officer of the NJSBA’s Construction Law Section. I was then elected a Charter Fellow of the Construction Lawyers Society of America. I now accept dozens of invitations to write and speak on construction law topics to local and national audiences.

Kevin O’Connor

Shareholder
Peckar & Abramson, P.C.
River Edge, Bergen County



What is your greatest contribution to the success of your company/clients?

I came into the law through a non-traditional channel—the U.S. military. After law school, I sought to learn as many areas of the law I could to improve my skillset. My real-life experiences have given me a leg up on issue spotting, and I developed strong tactical skills, often seeing a case as a game of chess. I also bring a practical spirit to the work I do, always trying to find out what the right result would be at the inception of a case, and keeping laser focused on that target.

How has your role as a “Leader in Law” evolved over the years? I have gradually seen my role evolve from being the “go to” guy to get a case done, in other words to work up a file and do all of the hands-on things that are done from soup to nuts, to someone who is actively mentoring and supervising a team of great people to do it exactly the way I learned to do it, freeing me up to be consulted at a higher level on all manner of legal issues that come up for our clients.

What inspires you to continue in your current profession? I am often called to represent people in their worst times, in many cases it is businesspeople who are fighting for their lives, whether it be a lawsuit between themselves and a co-shareholder or partner, or an action by the government claiming wrongdoing. I have gotten a great deal of satisfaction out of helping people find the right solution for them. There is no greater satisfaction in this career than finding solutions that allow people to return to their business lives and to thrive.



Elliot Ostrove

Co-Managing Partner
Epstein Ostrove, LLC
Edison, Middlesex County

What is your greatest contribution to the success of your company/clients? I have been our firm's "ombudsman" for ethics and professionalism. I was a member of my former firm's Conflicts and Ethics

Committee. I continue to work on a commitment to the highest standards and to instill that commitment in each of our lawyers and staff. As a result, we, as a firm, are open to discussion on what matters and how best to achieve results for our clients while maintaining the highest of ethical standards.

What is a career challenge you overcame? In 2014, I left Day Pitney (after 16 years) and joined Epstein Arlen & Ostrove, LLC (now Epstein Ostrove, LLC). I was the only business litigation attorney and only the fourth attorney in the firm. Over the past 7.5 years, working with my law partner Donny Epstein, we have grown that practice of four attorneys to a firm of 16 attorneys. I have grown the Business Litigation Group from a department of one (me) to a team of six litigators and one Of Counsel transactional attorney.

What do you enjoy most about your career? At its heart, the practice of law is a service profession. I most enjoy working with our clients, understanding their businesses, and making sure that whatever we do we are working in way that advances our clients' business goals. Some of the most satisfying outcomes of matters, for me, are when we are able to be creative in what can be accomplished using the law and the Court Rules to advance the business interests of our client.

Sherilyn Pastor

Partner and Chair, Insurance Recovery,
Litigation & Counseling Practice
McCarter & English, LLP
Newark, Essex County



What is your greatest contribution to the success of your company/clients? I have successfully litigated significant insurance disputes, securing billions of dollars for corporate policyholders and setting legal precedent. I won a \$15.6 million jury verdict against a negligent broker for Wakefern Food Corp.; established NJ law that "physical damage" includes loss of use and function under a property policy; and secured judgment that a kickback scheme was direct covered loss under a crime policy.

Who has been your most influential role model? My life's hero is my grandmother. We were born on the same day and celebrated our birthdays together for decades. She was strong, courageous and incredibly supportive. Widowed as a young mother of three, she was determined not just to provide for her family, but to help them succeed. Her capacity for forgiveness, kindness and love knew no bounds. She offers an incredibly high standard against which to measure my decisions and model my behavior.

What inspires you to continue in your current profession? Although I am thankful to have an intellectually rewarding job, I am inspired and blessed to have the opportunity to meet and be inspired by talented lawyers and judges from around the country. I have incredible clients and colleagues. Many of my closest friends and mentors, I initially met at ABA, the College of Coverage Counsel, and the Insurance Coverage Litigation Committee leadership events. I love the opportunity to work collectively with a community of talented professionals, and influence the direction of the legal profession.



eGovernance
Managed by eMazzanti ■ Powered by iPro

Limited Time – 20% DISCOUNT ON ALL PLANS

eGovernance is a Cloud based solution for preserving, discovering and accessing digital data within your email and document storage systems for compliance, audit, security, eDiscovery and warehousing of critical or older data.

This platform is an easy to use, fully managed solution designed for the creation and implementation of policies for Information Governance, records retention and eDiscovery.

- ✔ Index cloud-based O365 Content (Exchange, SharePoint, & Teams)
- ✔ Full Case Management & eDiscovery Tools
- ✔ Auto-sampling & compliance monitoring
- ✔ Message/document review, quarantine & redaction



- ✔ Full archival & independent storage in Azure
- ✔ Full export to PST, PDF, XML, Relativity
- ✔ Full retention & information governance policies
- ✔ Auditor & End User Access of Archives

To learn more about the plans or Schedule a Demo

Visit: egovernance.com/offer Call: 844.360.4499

2022

NJBIZ EVENT NOMINATIONS

NOMINATE NOW AT [NJBIZ.COM/EVENTS](https://njbiz.com/events)

40 UNDER 40

NOMINATION DEADLINE:
JULY 3

A program of NJBIZ
2022 Best Fifty
Women in Business

NOMINATION DEADLINE:
JULY 31

NOMINATION DEADLINE:
SEPTEMBER 11

A program of NJBIZ
LEADERS IN REAL ESTATE
CONSTRUCTION
AND DESIGN

NOMINATION DEADLINE:
OCTOBER 25

BUSINESS
OF THE YEAR

Nomination deadlines and event dates are subject to change,
visit njbiz.com/events for details.

Questions? Contact events@njbiz.com. • For sponsorship opportunities,
contact Ken Kiczales at kkiczales@njbiz.com.



Melissa Peña

Member
Norris McLaughlin P.A.
Bridgewater, Somerset County

What is your greatest contribution to the success of your company/clients? My greatest contribution to the success of my clients is that I place myself in my clients' positions when they make decisions. While I

point out the legal risks associated with a given action, I am not afraid to tell the client what I would do if it were my business. My advice is based on the practical issues associated with their business, and I often seek to avoid the cost associated with litigation.

What was the best business advice you ever received? Early in my career, a mentor taught me to think beyond the legal problem at hand and to always further a client's business objectives. As part of this lesson, the mentor urged me not to be afraid to take a position with a client. While lawyers are hired to point out both the risks and the benefits, good lawyers are not afraid to tell the client what they would do in their position.

What was a career challenge you overcame? I recently faced a career challenge during the pandemic. As a bankruptcy/restructuring attorney, I ironically found my work slowing down during the pandemic because there were moratoriums on foreclosure and eviction actions, which are the driving forces to bankruptcies. I overcame this challenge by focusing on my commercial litigation skills and learning new areas of the law. I also continued to market the benefits of recent amendments to the Bankruptcy Code to place myself in a position to obtain more bankruptcy work once the moratoriums were lifted.

Loren Pierce

Principal
Bressler, Amery & Ross
Florham Park, Morris County



What is your greatest contribution to the success of your company/clients? As a business lawyer, I see myself as an adviser and a problem solver who understands my clients' goals and can assist them in making complex business decisions. Once the decisions are determined, I litigate with passion and tenacity with a view toward creating an efficient, effective path to attain the desired result.

What was a career challenge you overcame? When I was a young lawyer, my prior firm's needs required I focus on a particular area of law to help a new large client. I developed a specialty in that area, but as the law in this field developed through significant court decisions, clients sent fewer cases. I expanded my practice areas and while it was difficult to learn new areas of substantive law while practicing, I succeeded. My opportunities flourished as I learned additional areas of substantive law, becoming a more seasoned trial lawyer.

What do you know now that you wish you'd known earlier in your career? Early in my career, I didn't fully appreciate the importance of networking. I focused on working and learning the substantive areas of the law. When I began to network, I viewed it solely as business development, but learned that it is a much richer experience. I have met wonderful professionals who have helped me grow as a lawyer and develop business contacts. Many of these contacts have given rise to personal relationships that have enriched my life, and in addition to helping them solve legal issues, I feel confident I have made positive contributions to their professional and personal lives.

Congratulations

TO OUR 2022 LEADERS IN LAW HONOREES

On this highly deserved recognition
of their exceptional achievements



Frank T. Cannone

Chair
Corporate Group



Lisa Lombardo

Director
Commercial & Criminal
Litigation Group

A Proven Approach

PERFORMANCE. PRESENCE. PRIDE.



Gibbons P.C. is headquartered at One Gateway Center, Newark, New Jersey 07102.

NJ NY PA DE DC FL

NJBIZ PREMIUM

SUBSCRIBE & PROFIT TODAY!

CALL 866-288-7699 OR VISIT

NJBIZ.COM/SUBSCRIBE

PRINT & DIGITAL + DATA SUBSCRIPTION



As a premium subscriber, receive all the benefits of a Print & Digital subscription, plus total access to NJBIZ's regional database, the engine that drives our award-winning lists.

Already a Print & Digital Subscriber?

Call to upgrade and have it all – NOW!

866-288-7699

- Over 3,600 company records
- Unlimited downloads
- PDFs of printed lists
- Sortable Excel files
- Unpublished data
- Additional contact worksheet
- Custom searches



DOWNLOAD





Linda Pissott Reig

Shareholder, Life Sciences and
Co-Chair of FDA Practice
Buchanan Ingersoll & Rooney
Newark, Essex County

What is your greatest contribution to the success of your company/clients? Throughout my career I have prioritized being deeply engrained in the industry.

By taking this approach, I have been able to help proactively get ahead of issues, as well as start discussions on how my clients can be innovative and on the forefront of industry trends. Being active in legal and life sciences professional organizations has also helped me to seek out this knowledge and forge genuine relationships that ultimately benefits my clients, as well.

How has your role as a “Leader in Law” evolved over the years? My role as a leader at this point is very focused on mentoring and empowering the next generation of lawyers and life sciences professionals. I am intentional when someone comes to me, aiming to be present and thoughtful in my advice and providing new opportunities and connections to others within my network to help others reach their goals.

What types of charities, community involvement or pro bono work are you involved in? I am fortunate to have a career that allows me to impact the community. Many of my outside activities, including my leadership positions in the REMS Industry Consortium, BioNJ and the International Bar Association’s Healthcare & Life Sciences Committee, are focused on public policy, patient safety and advancing the life sciences industry. I am also passionate about education, recently serving as a judge in the Pennsylvania Bar High School Mock Trial Competition and as a panelist for a Rutgers Law School career discussion, as well as participating on the Rutgers-Newark College of Arts & Sciences Dean’s Cabinet.



Arthur “Scott” Porter

Senior and Managing Partner
Fischer Porter & Thomas P.C.
Englewood Cliffs, Bergen County

What is your greatest contribution to the success of your company/clients? My greatest contribution to the firm’s success has been my ability to build and maintain a small dynamic law firm, which has represented a wide variety of clients at the litigation and transactional level to compete with and interact with large substantial firms to provide affordable and quality legal services.

What is your greatest contribution to the success of your company/clients? My greatest contribution to the firm’s success has been my ability to build and maintain a small dynamic law firm, which has represented a wide variety of clients at the litigation and transactional level to compete with and interact with large substantial firms to provide affordable and quality legal services.

What do you enjoy most about your career? I most enjoy representing folks whose rights and interests have been impaired by others and the working to overcome the roadblocks that they are confronted with. I work with clients to find practical and equitable solutions to their issues, and if we are not able to find an acceptable resolution, I turn to the court system. I enjoy advocating for clients at all levels. For me, trial work is the greatest reward that an attorney can achieve. In doing this, I love working with young and new attorneys to help them become better counselors, advocates and trial attorneys.

What would most people be surprised to learn about you? For the years of 1971 through 1973, I lived in Alor Star Malaysia, with my family. I was 15 years old and my parents were Peace Corps volunteers. My brothers and I attended the Sultan Abdul Hamid College where we made many friends with the diverse and interesting student body of Malays, Chinese and Indians. We learned the languages and the different cultures and traveled throughout South East Asia. These two years played a major role in my life and outlook on the world.

CONGRATULATIONS!

Hackensack Meridian Health

is proud to recognize

Ann Gavzy



On this well-deserved recognition of

being honored as one of

NJBIZ’s 2022 Leaders in Law

Ann Gavzy is committed to improving health care for the communities we serve and is a proven leader of positive change.



ANN GAVZY, ESQ.

Executive Vice President
and Co-Chief Legal Officer,
Transactions and Corporate Services
Hackensack Meridian Health



Hackensack
Meridian Health

KEEP GETTING BETTER

HackensackMeridianHealth.org



Ruth A. Rauls
 Partner; Litigation Vice Chair;
 Working Parents Committee Co-Chair
 Saul Ewing Arnstein & Lehr LLP
 Princeton, Mercer County

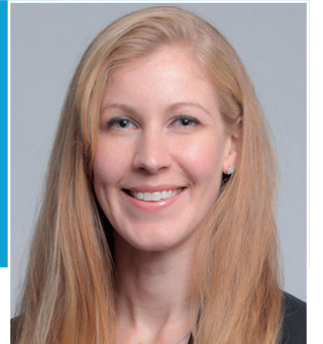
What is your greatest contribution to the success of your company/clients? I have served in many leadership positions at the firm, and over the last two years have helped lead our newly-formed Working

Parents Committee. This gave me the opportunity to lead, serve and assist our attorneys and staff as they managed unimaginable stresses from the pandemic, and contribute to the firm's ability to support parents and retain talent. I continue to serve my clients, litigate high stakes matters and answer calls for advice—all of which contribute to the success of Saul Ewing. However, ensuring we take care of and support our people has been truly meaningful to me.

Who has been your most influential role model? In law school, I found a group of women that I studied with, leaned on and learned from. Although many years have passed and we have all moved on to different professional lives, we are still connected through that bond forged in the law school trenches. We trade texts and phone calls seeking advice from each other and sharing our accomplishments.

What was the best business advice you ever received? "If you are not scared of the next challenge, then you are not reaching high enough." It's the moments where we are uncomfortable or unsure of a new challenge or problem where we grow, as professionals and as people. This has helped me embrace new challenges, dive into difficult client issues, face demanding questions from a court and handle awkward situations with the appropriate dose of humility and grace.

Natalie Richer
 Partner
 Lerner David Intellectual Property Law
 Cranford, Union County



What is your greatest contribution to the success of your company/clients? I have been able to devise creative solutions to help my clients in each

legal issue that arises. Numerous times I have been able to take "problems" and turn them into opportunities. For example, in patent cases that were previously handled by prior law firms and transferred to Lerner David, I am able to not only find and correct errors, but to leverage opportunities to increase patent coverage. This in turn strengthens the client's portfolio and increases value.

What do you feel is the biggest misconception about your career? That women have to choose between a successful law career and a family. Both are possible. I am actively involved in raising four wonderful kids, which I am able to do by maximizing my time and by accepting help from my husband, babysitter, colleagues and everyone in between. I enjoy support from other women in the New Jersey Women Lawyers Association, and we share tips on how to achieve balance while at the same time networking and building relationships. I attend my kids' sporting events, doctor visits, school functions, etc., but I use every opportunity in between to get my work done.

What inspires you to continue in your current profession? Each time I solve a legal problem for a client, particularly when the problems are highly technical or complex, or when the solution is especially creative, I am filled with a sense of satisfaction and pride. That feeling propels me to do it again and again. I get a similar feeling from teaching junior lawyers how to best serve clients, and seeing them succeed.

ARE YOU ON THE LIST?

Submit your company today!

#GetOnTheList

 Lists@NJBIZ.com

 NJBIZ.com/Lists

 [@NJBIZLists](https://twitter.com/NJBIZLists)





Beth Rose

Chair, Product Liability Practice Group
Sills Cummis & Gross P.C.
Newark, Essex County

What is your greatest contribution to the success of your company/clients? I pride myself on being prepared, understanding the needs of my clients, and giving them practical advice that is consistent with

their business goals. I make it a point to learn about their respective business, to honestly evaluate the strengths and weaknesses of their legal position, and to give my best judgment even if it is not favorable.

Who has been your most influential role model? My mother has taught me the value of hard work, commitment, and advocating for causes that are important to you. She is a true pioneer in developing services in New Jersey for individuals with disabilities. She is a tireless worker who never gives up; as a result, neither do I.

What types of charities, community involvement, or pro bono work are you involved in? I am a longstanding Executive Committee member and Master in the Morris Pashman Inn of Court. My youngest sister has cerebral palsy, so contributing to the disabled community has always been a priority for me. I am an active member of Pillar Care Continuum, serving on the Board of Trustees for over 20 years. I am also on the Board of Trustees of Jewish Services for the Developmentally Disabled.

What would most people be surprised to learn about you? First, I am an avid weight lifter—squats, deadlifts—you name it, I do it. It is a great way to start the day, before real life sets in. Second, I have a passion for traveling to national parks in the U.S. and throughout the world.

Kenneth Rosen, Esq.

Of Counsel
Lowenstein Sandler LLP
Roseland, Essex County

What is your greatest contribution to the success of your company/clients? Developing and building the bankruptcy and restructuring practice from two

people in 2000 to 30 people in 2022, from a local New Jersey practice to a nationwide practice and one that has represented debtors and creditors in some of the largest bankruptcies in the country.

What is a career challenge you overcame? Proving that a law firm based in New Jersey could compete with the most prestigious national law firms for roles in the largest chapter 11 cases. Today, Lowenstein Sandler’s bankruptcy and restructuring practice goes far beyond New Jersey’s border and competes head on with national law firms.

How has your role as a “Leader in Law” evolved over the years? Initially “leadership” was mostly about generating more business. Then, “leadership” also required being a model for how to treat other people. Next, it included mentoring the next generation of attorneys. Finally, philanthropy and volunteerism were added to what it takes to be a “leader in law.”

What do you enjoy most about your career? Pursuing and winning new business always feels great. But, as I have gotten older, mentoring young lawyers to enable them to be better bankruptcy attorneys feels better and better. So does demonstrating to the next generation how philanthropy and volunteerism is (1) good for business, (2) good for building a reputation, and (3) makes one feel especially good inside—hopefully to get others to do the same.



Congratulations to:



Jeffrey S. Chiesa
and Marie L. Mathews

on being named to the
NJBIZ Leaders In Law List
for 2022.



Jeffrey S. Chiesa

Marie L. Mathews

You embody the traits we value at CSG Law – commitment to excellence, steadfast service to clients and the community, and dedication to maintaining the special culture at our firm which we have built together.

We are proud to be your colleagues and friends, and join with you to celebrate this special accomplishment.

NEW JERSEY | NEW YORK
Prior results do not guarantee a similar outcome.

CHIESA SHAHINIAN & GIANTOMASI PC
csglaw.com



Renee Rubino

Partner
Gomperts Penza McDermott & Von Elle
Springfield, Union County

What is your greatest contribution to the success of your company/clients? I make the success of my firm and my clients a top priority. With the firm, I focus on everyone's success, not just mine. We all

benefit when we all do well. If I can help a colleague retain a new client, meet a filing deadline, or improve the quality of his or her work product, I feel good about my role as a professional and team player.

What was the best business advice you ever received? Early in my career when I was a young associate at a large law firm, the managing partner said, "Do the right thing, and the money will follow." It was a great lesson in setting priorities by focusing on values and high ethical standards above all else.

What types of charities, community involvement or pro bono work are you involved in? I have volunteered to handle cases for NJ Legal Services, and routinely donate to many local charities. My longest standing service is to the United Way, which began in 2008 as part of "Women United in Philanthropy" in Bergen County. After moving to Warren County, I joined "Women United" of the United Way of Northern New Jersey, which focuses on local families in need.

What inspires you to continue in your current profession? Realizing that it is an honor to do what we do for a living. People come to us at their most vulnerable times, especially in divorces. It is gratifying to help someone find peace and stability after one of the most difficult experiences they may ever face.

Lee Samuelson

General Counsel and
Chief Compliance Officer
Saxum Real Estate
Summit, Union County



What is your greatest contribution to the success of your company/clients? Since I began at Saxum in

2020, I've focused on building scalable processes and a foundation for Saxum's legal activities. My greatest contribution is taking on the challenge of building Saxum's start-up legal framework into a more institutionalized process, which will streamline Saxum's efficiency and ability to handle increasingly complex deals. As General Counsel and Chief Compliance Officer, it's been my role to find new and creative ways to tackle obstacles and think around questions that previously would have stalled a process. Challenges come at every turn, and it is my goal to ensure we have thought several plays ahead.

How has your role as a "Leader in Law" evolved over the years? Prior to Saxum, I was a partner at institutional law firms, where I acted as a technician strictly focusing on legal matters to now acting as an advisor with a holistic approach. I oversee business management, address how to accomplish tasks, finance needs, and promote efficiency all on top of traditional legal matters. I've broadened my reach, becoming a resource within the company. Everyone is a sounding board, which I believe is a large reason why we're able to work so efficiently.

What do you enjoy most about your career? I greatly enjoy the opportunity for growth I have seen at every stage of my career. At Saxum, I am working with a young and energized, like-minded group who truly respects their impact on the community. We're beautifying and making more accessible living spaces for the future.

CONGRATULATIONS TO NJBIZ LEADER IN LAW HONOREE



LINDA PISSOTT REIG

Co-Chair, FDA Section

Buchanan
Ingersoll · Rooney

Newark | Princeton | 15 Offices Nationwide

BIPC.com



All Business. All New Jersey.

Subscribe Today!

Know what the business
leaders know.



866-288-7699 | www.NJBIZ.com | facebook.com/NJBIZ | twitter.com/NJBIZ

NJBIZ



John M. Scagnelli

Partner
Scarinci Hollenbeck, LLC
Lyndhurst, Bergen County

What is your greatest contribution to the success of your company/clients? I served as Chair of the Environmental and Land Use Group at Scarinci Hollenbeck for 15 years. In 2014, I was named as

Environmental Counsel for the New Jersey State League of Municipalities, and I have served as a Member of the Board of Trustees of the New Jersey State Licensed Site Remediation Professionals Association (LSRPA) and as past Chair of the LSRPA's Risk Management & Loss Prevention Committee. I also serve as the Chair of the firm's Professional Ethics and Conflicts Committee.

How has your role as a "Leader in Law" evolved over the years? The legal work I do has evolved more into identifying strategic client approaches and objectives, and working with other professionals to accomplish those objectives. This involves working with other legal counsel and environmental consultants in dealing with environmental situations, exposures and liabilities.

What was a career challenge you overcame? In 1986, I was Vice President and General Counsel at Allied Maintenance Corporation, which I left to join Clapp & Eisenberg. Going from corporate counsel to outside legal counsel was a challenge, and it started my environmental career.

What do you enjoy most about your career? The challenge of identifying the client's issues and objectives and working to accomplish them within the parameters of the facts and the law, and applying my own experience to the client's situation.

Michael Shadiack

Chair, Labor and
Employment Law Group
Connell Foley LLP
Roseland, Essex County



What is your greatest contribution to the success of your company/clients?

As an employment lawyer, I help businesses in crisis mode on a daily basis. Whether they are facing claims of harassment, termination decisions, COVID issues, or other employee-related challenges, clients come to me in immediate need of guidance. With negative employment issues potentially being devastating to a company's business, the counsel I provide often has far-reaching impact, helping them prevent litigation, save money, protect employee morale, and ensure compliant business practices.

What was the best business advice you ever received? My grandfather, who was a very successful small business owner, always stressed that "people do business with people they like." To be truly successful means to be genuine, to treat everyone with respect, and to be accountable and trustworthy. By doing so, you will earn the respect of others and, in turn, their business.

What do you enjoy most about your career? Practicing employment law allows me to live out my passions: assisting, educating and leading others. Coming from a family of educators, I learned early on the value of building relationships in a way that your advice is sought out, trusted and respected. Merging that mindset with my legal knowledge has enabled me to counsel clients in a practical yet compassionate manner. I have found it extremely rewarding to apply this approach, knowing I am helping my clients make the best decisions for their companies and their employees.



Congratulates



Cynthia Borrelli
Healthcare



Loren Pierce
Business

**on being honored
as 2022 NJBIZ
Leaders in Law!**

www.bressler.com

Congratulations

Yannick Wood, the Institute's Criminal Justice Reform Director,
for being recognized as an NJBIZ Leader in Law!





Rachel Stark

Shareholder
Stark & Stark, P.C.
Lawrenceville, Mercer County

What is your greatest contribution to the success of your company/clients? My favorite role is to act as “in house” counsel to many clients who either

have no in-house legal team. I act as both an advisor and teacher to our clients, to help them from when their business or organization is just an idea to a potential sale or other succession.

What was a career challenge you overcame? When I joined Stark & Stark, I was placed in our firm’s corporate group. Having started off my career in litigation, it was a big adjustment. The more work I did as a corporate lawyer, I was able to proactively counsel clients on potential issues they may have in the future rather than only addressing problems that have already occurred.

How has your role as a “Leader in Law” evolved over the years? Having literally grown up at Stark & Stark, I was indoctrinated at a young age that being a lawyer means being part of a larger community. I have always been active in the community. As I have spent more time as a lawyer and community member, my role has changed to being a “behind the scenes” counselor to many organizations in the community.

What do you enjoy most about your career? My clients are all incredibly talented and passionate about what they do. I love getting to know what they do and why, being part of their team, being entrusted with the responsibility of helping them to reach their goals, and being part of their success.



Anna Maria Tejada

Partner
Saul Ewing Arnstein & Lehr, LLP
Newark, Essex County

What is your greatest contribution to the success of your company/clients? My greatest contribution

is helping my clients ensure that their most valuable asset—their workforce—feels they are part of a respectful workplace. As a trusted advisor, I guide clients in developing policies and procedures to establish a fair and balanced work environment in line with their culture. My unique experiences as a first-generation, bicultural and bilingual attorney better inform my advice and counsel to clients.

Who has been your most influential role model? My mother, who at the age of 21, immigrated to the U.S. from the Dominican Republic to provide my sisters and me the opportunity to pursue the American Dream. She instilled in us the importance of an education and a strong work ethic. She raised us to be resilient, respectful and empathetic, while valuing our independence and individuality. She led by example and demonstrated through her actions the importance of community and family.

What inspires you to continue in your current profession? Unfortunately, there is still a dearth of diversity in the legal profession. As one of a few Latina attorneys, I know I am in a position of privilege, and it is incumbent upon me to not only be visible but use my position of leadership to impact the lives of those coming behind me and our respective communities. We must “lift as we climb” to ensure the future generations have access to knowledge and a network that can allow them to succeed in this profession and to accurately reflect the citizenry of this country.



Deborah Tyler

Deputy General Counsel
Sharp Electronics Corporation
Montvale, Bergen County

What is your greatest contribution to the success of your company/clients? Being “more than just a lawyer.” I develop strong relationships with leaders in different functions across the company that allow

me the opportunity to use my voice to effect positive and meaningful changes to the company’s culture and to help shape the development of important initiatives for employees, including the first professional development resource group for women at the company and the first formal mentorship program for company employees.

What do you know now that you wish you’d known earlier in your career? How important it is for lawyers to appreciate and focus on understanding financial and business issues that impact their company rather than solely focusing on the legal issues. To be a more effective advisor to the business team, it is absolutely critical for in-house counsel to take a holistic approach that incorporates financial acumen, legal knowledge and most importantly a practical perspective to address whatever the particular issue or need of the business.

What do you enjoy most about your career? I truly enjoy working for a global technology company because the business environment is rapidly evolving, and that creates challenges and also opportunities to learn about new issues. There is always some new matter I need to delve into in order to proactively help the business anticipate risk and strategically address it before it becomes a problem. That evolving role, in conjunction with the ability to help people, is truly what I enjoy most.

Deirdre Wheatley-Liss

Principal – Wealth Preservation
Porzio, Bromberg & Newman, P.C.
Morristown, Morris County

What is your greatest contribution to the success of your company/clients? Passion. As a “concierge

lawyer,” I empower business owners to leverage laws to protect their wealth and businesses from uncertainties, and maximize business transactions by minimizing taxes, risk and compliance costs. I am honored to partner on the journey from startup, through growth, to eventual exit and succession. As a tax attorney, I mitigate the role of their silent partner—the IRS. They have one business and I have represented hundreds. I leverage my experience to create tailored legal structures as the foundation for a client’s legacy, address immediate legal needs, and offer practical solutions to business issues.

What was the best business advice you ever received? Be a “Go Giver.” The book “The Go Giver” shares how the secret to success isn’t getting—it’s giving. This is reflected in every facet of my business. I start each call with, “How can I help you?” I lead my team by asking what they need to support their professional goals. I bring together small groups for the only reason that they should know each other as a resource for their businesses to grow.

What do you enjoy most about your career? I love helping people every day. Businesses are owned by people and employ people I will never meet. My work supports a business’ growth and mitigates the risks of being an entrepreneur. By advising business owners I am helping them and their families, the families that they employ, and our community by expanding New Jersey’s economy for the benefit of all.



Linda Wong

CEO & Partner
Wong Fleming
Princeton, Mercer County

What is your greatest contribution to the success of your company/clients? My contributions are based upon a collective effort, where our work is driven by excellence, an understanding of our client's business needs, and a commitment to diversity, professionalism and high ethical standards.

Who has been your most influential role model? Dan Fleming, my partner and husband, has been so influential in working together to run a law firm and helping me be the best attorney I can be. He is a great lawyer in his own right and has taught me how to handle jury trials at the highest level. He is a great supporter of everything I do and has helped me become the best at what I do.

What was the best business advice you ever received? Always be confident in your abilities, work hard to be the best in your profession, and treat others with respect no matter their position in life. I have learned this from the many people I have crossed paths with and feel so fortunate to have met so many talented people over the years.

What types of charities, community involvement or pro bono work are you involved in? I am currently an Ambassador for the National Health Law Program, and actively support NJ Leep and the Volunteer Lawyers for Justice. I actively participate in diversity initiatives with bar associations and was a recent panelist at the 2022 Conference of the Leadership Institute for Women of Color Attorneys. I have also been a member of the ABA Commission on Racial and Ethnic Diversity in the Profession.

Yannick Wood

Director of Criminal Justice Reform
New Jersey Institute for Social Justice
Newark, Essex County



What is your greatest contribution to the success of your company/clients? Being a former prosecutor who can provide a fuller perspective to the issues of criminal justice reform and transformation. For too long there has been an "us versus them" dualism when it comes to criminal justice reform advocates and people in law enforcement or the halls of power. Neither side fully knows the other, however everyone has a strong point of view. I feel like I've been able to help bridge that gap.

How has your role as a "Leader in Law" evolved over the years? In all of my positions, I've been a leader empowered to impact the lives of others. As a prosecutor, I had the power to release or detain individuals and to direct prosecutions resulting in justice, rehabilitation and restoration. In my current position as an advocate, my leadership has evolved into a moral authority to restore and reform. I use data, policy and legal arguments to convince policy makers that the racial disparities in New Jersey are not just numbers on a page but are real impediments to the opportunities, health and outcomes of real people across our state.

What would most people be surprised to learn about you? I once spent time living in the Himalayas, in Bhutan, helping one of the world's newest democracies develop its country's law after ending a very recent history of feudalism. I am a former fishmonger and a classically trained pianist who loves Franz Schubert and Keith Jarrett with a passion for world travel and a fondness for Korean dramas.

Announce your company's new hires and promotions to our elite NJBIZ audience, in print and online!

Executive Moves

For just \$249 your notice will be published indefinitely on the Executive Spotlight page of our website, included in an upcoming print issue of our weekly newspaper and featured in one of our e-newsletters.

Executive Close Up

For \$449 your individual announcement, featuring accompanying portrait and Q&A, is guaranteed publication in print, online and in an e-newsletter to our subscribers.



For more information, visit njbiz.com/submit-an-executive-moves or contact us at lists@njbiz.com

NJBIZ 2022 LEADERS IN LAW

WE MEAN BUSINESS



ANGELO J. GENOVA, ESQ.

New York • Newark • Jersey City • Basking Ridge • Philadelphia • Camden

Genova Burns LLC • www.genovaburns.com